

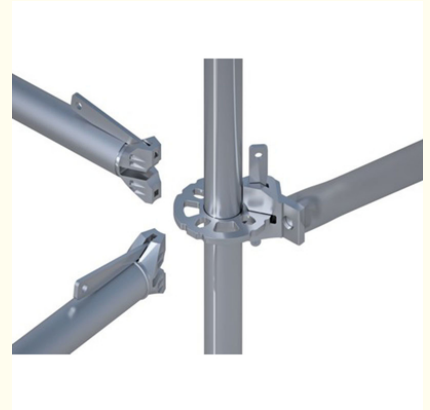
Architecture Application Ringlock System Scaffolding Hot Dip Galvanized

Our Product Introduction

for more products please visit us on bythaiscaffold.com

Basic Information

- Place of Origin: China
- Brand Name: Bythai
- Certification: SGS
- Model Number: BM202
- Price: 4.5-8.5
- Packaging Details: In bundles
- Delivery Time: 10-15
- Payment Terms: TT/TC



Product Specification

- Material: Q235 Steel
- Product Name: Ringlock System
- Surface Treatment: Hot-dip Galvanized
- Warranty: 2 Years
- Shipping Origin: China
- Application Scenarios: Architecture
- Highlight: **Architecture Galvanized Ringlock System Scaffolding**
, 8holes Ringlock System Scaffolding



Product Description:

Product Overview – Ringlock System Scaffolding

The Ringlock System Scaffolding is a highly efficient and cost-effective scaffolding solution designed for various architecture projects. Made of high-quality Q235 steel, this scaffolding system is durable and able to withstand high load capacity, making it a reliable choice for construction sites.

The main feature of the Ringlock System Scaffolding is its secure scaffolding joints, which ensure a safe and sturdy support for workers and materials. This unique design also allows for easy assembly, making it a popular choice among contractors and construction companies.

One of the key advantages of the Ringlock System Scaffolding is its versatility. It can be used for a wide range of applications, including construction, maintenance, and renovation projects. Its flexibility and adaptability make it a valuable asset for any construction project. To ensure the durability and longevity of the scaffolding, the Ringlock System is hot-dip galvanized, providing a protective layer against rust and corrosion. This not only extends its lifespan but also reduces maintenance costs.

With a 2-year warranty, customers can have peace of mind knowing that the Ringlock System Scaffolding is backed by a reliable guarantee of its performance and quality. This makes it a popular choice among architects, contractors, and construction companies. Thanks to its efficient design and high load capacity, the Ringlock System Scaffolding can significantly improve construction efficiency. This is especially beneficial for projects with tight timelines, as it allows for quicker and more efficient construction.

In conclusion, the Ringlock System Scaffolding is a top choice for any architecture project. Its secure scaffolding joints, versatile usage, durable and long-lasting materials, and efficient construction make it a reliable and cost-effective solution for any construction site. With its hot-dip galvanization and reliable performance, the Ringlock System Scaffolding is a valuable asset for achieving safe and sturdy support in construction projects.





Technical Parameters:

Product Name	Ringlock System Scaffolding
Application Scenarios	Architecture
Material	Q235 Steel

Surface Treatment	Hot-dip Galvanized
Shipping Origin	China
Warranty	2 Years
Key Components	Specifications
Ring Lock Type Scaffold	5'x5' or 7'x7' (1.52m x 1.52m or 2.13m x 2.13m)
Scaffolding Ring Lock	O.D. 48.3mm x 3.2mm thickness
Ringlock Rosette	8 holes or 4 holes
Ledger Head	O.D. 48.3mm x 3.2mm thickness
Standard	O.D. 48.3mm x 3.2mm thickness
Brace	O.D. 48.3mm x 3.2mm thickness
Diagonal Brace	O.D. 48.3mm x 3.2mm thickness

Applications:

Ringlock System Scaffolding - Bythai

Brand Name: Bythai
Model Number: BM202
Place of Origin: China
Certification: SGS
Price: 4.5-8.5
Packaging Details: In bundles
Delivery Time: 10-15
Payment Terms: TT/TC
Application Scenarios: Architecture
Surface Treatment: Hot-dip Galvanized
Product Name: Ringlock System
Warranty: 2 Years
Shipping Origin: China
Introduction

The Ringlock System Scaffolding, manufactured by Bythai, is an innovative and highly efficient scaffolding system that is compliant with international scaffolding standards. The BM202 model is designed and produced in China, with a certification from SGS ensuring its quality and safety standards. This product has been widely used in the field of architecture, due to its versatile usage, easy assembly, high load capacity, and cost-effectiveness. Its hot-dip galvanized surface treatment also ensures its durability and reliability, making it a preferred choice for construction projects.

Application Scenarios

The Ringlock System Scaffolding is suitable for a wide range of architecture projects, including residential, commercial, and industrial construction. Its high load capacity makes it ideal for both light and heavy-duty applications. It is also commonly used for temporary structures, such as bridges, stages, and concert platforms. The easy assembly process and versatile usage allow for quick and efficient installation, making it a popular choice for time-sensitive projects.

Features

Innovative Ring Lock Design: The Ringlock System Scaffolding features a unique ring lock design that allows for high load capacity and easy assembly.

Versatile Usage: This product can be used for various applications, including straight, curved, and circular structures. It is also compatible with other scaffolding systems, allowing for great flexibility in design and usage.

Easy Assembly: The Ringlock System Scaffolding can be easily assembled with minimal tools and labor. Its modular design allows for quick and efficient installation, saving time and costs for construction projects.

High Load Capacity: With its innovative design and high-quality materials, this product has a high load capacity, making it suitable for both light and heavy-duty applications.

Safety: The Ringlock System Scaffolding has been tested and certified to meet international safety standards, ensuring the safety of workers and the stability of the structure.

Durability: The hot-dip galvanized surface treatment provides protection against corrosion, rust, and extreme weather conditions, ensuring the longevity and durability of the scaffolding system.

Reliable Quality: The Ringlock System Scaffolding is manufactured in China with strict quality control measures in place, ensuring its reliability and consistency in performance.

Cost-effective: With its easy assembly process, high load capacity, and durability, the Ringlock System Scaffolding offers a cost-effective solution for construction projects, saving time and costs in the long run.

Warranty and Shipping

The Ringlock System Scaffolding comes with a 2-year warranty, providing peace of mind for buyers. It is shipped from China, ensuring its high-quality and authentic origin.

Conclusion

The Ringlock System Scaffolding, manufactured by Bythai, is a reliable and cost-effective solution for construction projects. Its compliance with international scaffolding standards, innovative design, versatile usage, and high load capacity make it a preferred choice for architects and contractors. With its easy assembly process, safety, durability, and warranty, this product offers value for money and a trusted solution for all scaffolding needs.

Customization:

Customized Service for Bythai BM202 Ringlock System Scaffolding

Brand Name: Bythai

Model Number: BM202

Place of Origin: China

Certification: SGS

Price: \$4.5-8.5/piece

Packaging Details: In bundles

Delivery Time: 10-15 days

Payment Terms: TT/TC

Warranty: 2 Years

Surface Treatment: Hot-dip Galvanized

Application Scenarios: Architecture

Product Name: Ringlock System

Shipping Origin: China

Key Features of Bythai BM202 Ringlock System Scaffolding:

High quality ringlock ledger head for secure scaffolding joints

Cost-effective ring lock system for efficient construction

Easy assembly and disassembly for quick installation and dismantling

Hot-dip galvanized surface treatment for durability and corrosion resistance

Suitable for various architecture scenarios

Packing and Shipping:

Packaging and Shipping for Ringlock System Scaffolding

Our Ringlock System Scaffolding is carefully packaged and shipped to ensure safe delivery and easy assembly at your job site.

Packaging:

All components are securely wrapped in plastic or bubble wrap to prevent any damage during transportation.

Small parts are placed in labeled bags for easy identification and organization.

Each package is clearly labeled with the contents and quantity for easy inventory management.

Packages are stacked and strapped together to prevent shifting during transit.

Shipping:

We offer multiple shipping options to accommodate your needs:

International shipping is available for customers outside of our local delivery area.

For domestic orders, we offer standard and expedited shipping options.

Truck delivery is available for large orders or bulk shipments.

Our experienced logistics team will work with you to determine the most efficient and cost-effective shipping method for your specific order.



Bythai Scaffolding Co.,Ltd



17300780862



info@bythaiscaffolding.com



bythaiscaffold.com

No. 605,Industrail Exchange Center ,Huanghua Town Changsha Hunan China